

لجنة حصر وتطوير الفرص الاستثمارية
اللجنة الفرعية للتعليم والتدريب

National Deal Flow Committee
Education & Training Subcommittee

KAEC K-12 School Opportunity

Investment Opportunity – K-12 Education

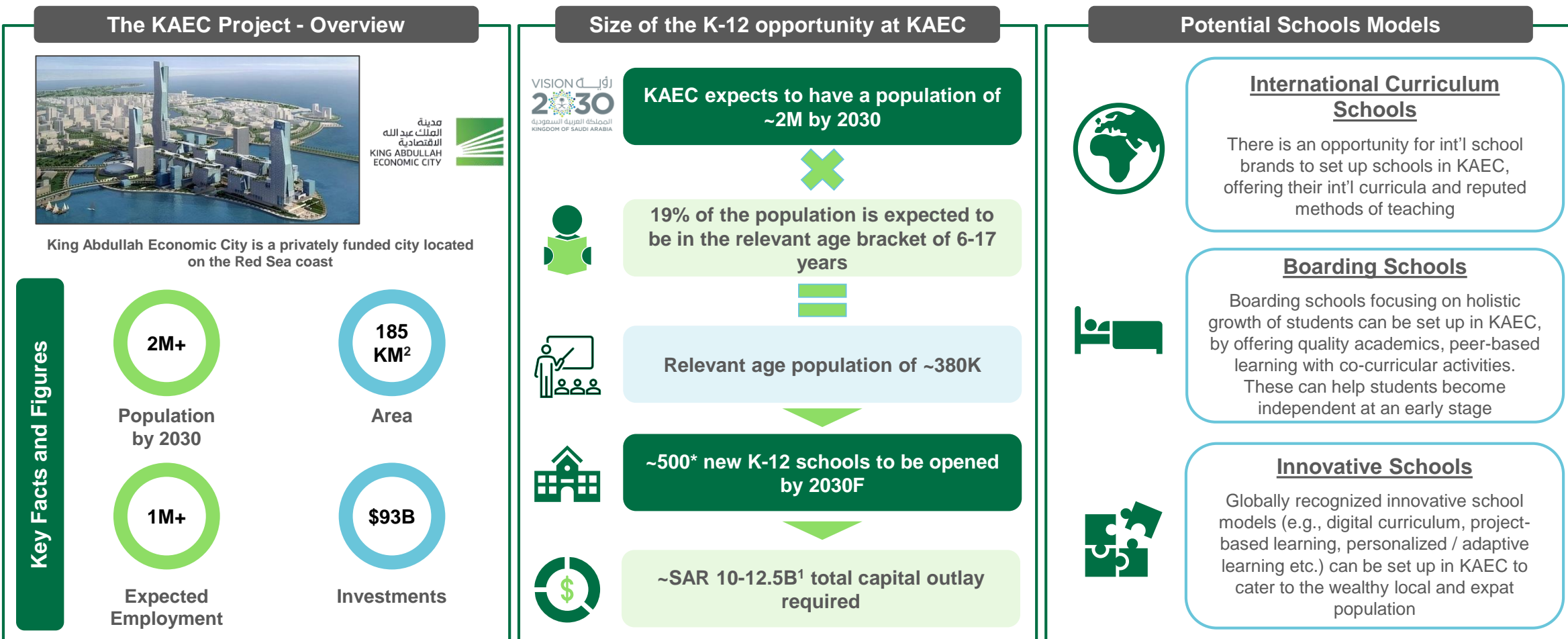
April 2022



KAEC K-12 Opportunity

OPPORTUNITY DESCRIPTION: Invest in KSA's education sector by establishing high-quality, K-12 schools in KAEC

OPPORTUNITY REVIEW



Note: *-Assuming average scale of ~750 students per school; ¹-Assuming an average capital of SAR ~20-25M per school

Source: KAEC, Vision 2030



KAEC K-12 Opportunity

OPPORTUNITY DESCRIPTION: Invest in KSA's education sector by establishing high-quality, K-12 schools in KAEC

KAEC OVERVIEW

The KAEC Project

The Project



Launched in 2006, King Abdullah Economic City (KAEC) is a privately funded city located on the Red Sea coast, 100 KM away from Jeddah. The city is expected to be completed by 2029. The sectors of focus are:

- Logistics
- Education
- Aviation
- Financial Services
- Light & Processing Industry
- Hospitality & Tourism
- Healthcare & Wellness
- Technology & Digital

Key facts and figures



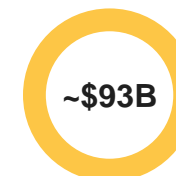
Area



Expected population



Expected Employment



Investments

Features of KAEC



~90 KM away from King Abdulaziz International Airport



Easy access (within 60 minutes) to major cities: Makkah, Madinah, and Jeddah



2nd largest port on the Red Sea with a large growth potential

6 planned zones



17.3 KM² modern world class seaport



Educational Zone with institutes for all educational levels & advanced R&D facilities



Hotels, resorts and theme parks for tourism



Residential area with ~16K properties



Industrial District with 50+ national and Int'l companies





KAEC K-12 Opportunity

OPPORTUNITY DESCRIPTION: Invest in KSA's education sector by establishing high-quality, K-12 schools in KAEC

KAEC K-12 OPPORTUNITY

Size of the K-12 opportunity in KAEC



KAEC expects to have a population of ~2M by 2030



19% of the population is expected to be in the relevant age bracket of 6-17 years



Relevant age population of ~380K



~500* new K-12 schools to be opened by 2030F



~SAR 10-12.5B¹ total capital outlay required



Current K-12 provision in KAEC



The World Academy
أكاديمية العالم



The World Academy
(TWA)

EDUREACH

- TWA is currently the only international school in KAEC offering British/American curriculum for boys and girls aged 3-18
- The school has a capacity of ~2.3K students and focuses on holistic development of a children through technology integration in day-to-day teaching and learning
- The school offers attractive extra-curricular activities like soccer, cricket, tennis, swimming, art & music studies, and theatre
- TWA lays emphasis on elements of Saudi Education System such as focus on Islamic Studies and native Arabic language
- The World Academy offers day-schooling, boarding services, and special needs program for autism

Licensing Entity:
Ministry of Education
وزارة التعليم
Ministry of Education




Note: *-Assuming average scale of ~750 students per school; ¹-Assuming an average capital of SAR ~20-25M per school



KAEC K-12 Opportunity

OPPORTUNITY DESCRIPTION: Invest in KSA's education sector by establishing high-quality, K-12 schools in KAEC

KAEC POTENTIAL SCHOOL MODELS

Type of School	Description	Applicability to KAEC
 <p>International Curriculum Schools</p>	<p>There is an opportunity for int'l school brands to set up schools in KAEC, offering their int'l curricula and reputed methods of teaching</p>	<p>Given KAEC's focus on becoming a global logistics and light-industry hub, the city will potentially witness and inflow of a large number of high income expats and locals. KAEC's offering of a supportive environment for businesses and entrepreneurs coupled with provision of world-class living facilities will drive migration of wealthy population to KAEC, the children of whom will require a supply of quality Int'l curriculum schools</p>
 <p>Boarding Schools</p>	<p>Boarding schools focusing on holistic growth of students can be set up in KAEC, by offering quality academics, peer-based learning with co-curricular activities. These can help students become independent at an early stage</p>	<p>KAEC's aims to provide world class infrastructure and excellent connectivity with surrounding regions through air, rail, and roads, making it a strategically attractive destination for setting up boarding schools. Boarding schools in KAEC will enable students to experience a modern lifestyle in a technology integrated city, close to diverse ecosystem, and potentially mould KAEC into an educational hub in the region</p>
 <p>Innovative Schools</p>	<p>Globally recognized innovative school models (e.g., digital curriculum, project-based learning, personalized / adaptive learning etc.) can be set up in KAEC to cater to the wealthy local and expat population</p>	<p>Innovative school models like experiential, personalized and adaptive learning, can potentially see a huge uptake in KAEC driven by demand from wealthy families. Schools that offer holistic development while exposing children to modern learning and teaching techniques will potentially be in high demand, additionally driven by quality employment / post-secondary education opportunities post graduation</p>

DISCLAIMER

- This report must be used only to access information, and the information must not be construed, under any circumstances, explicitly or implicitly, as an offer to sell or a solicitation to buy or sell or trade in any opportunity herein mentioned.
- Ministry of Investment (MISA) has no undertaking to update these materials after the date, with the understanding that such information may become outdated or inaccurate.
- Mentioned information in this report is obtained from reliable sources but its accuracy and reliability are in no way guaranteed. No guarantee of any kind is tacit or explicit when projections of future conditions are attempted. MISA has used public/or confidential data and assumptions and has not independently verified the data and assumptions used in the analyses. Changes in underlying data or operating assumptions will clearly impact the analyses and conclusions.
- The financial evaluations, projected market and financial information, and conclusions contained in these materials are based upon standard methodologies, are not definitive projections, and are not guaranteed by MISA
- The content of this report must not be construed as an implied promise or guarantee for profit or limited loss express or implied by or from MISA or any of its officers, directors, employees and affiliates. All mentioned investments in this report are subject to risk, which should be considered prior to making any investment decisions
- MISA shall have no liability whatsoever to any third party, and hereby any third party waives any rights and claims it may have at any time against MISA with regard to this report, any services or other materials, including the accuracy or completeness thereof.