

Al-Madina International EY Schools

Investment Opportunity - EY

EDUCATION – September 2022





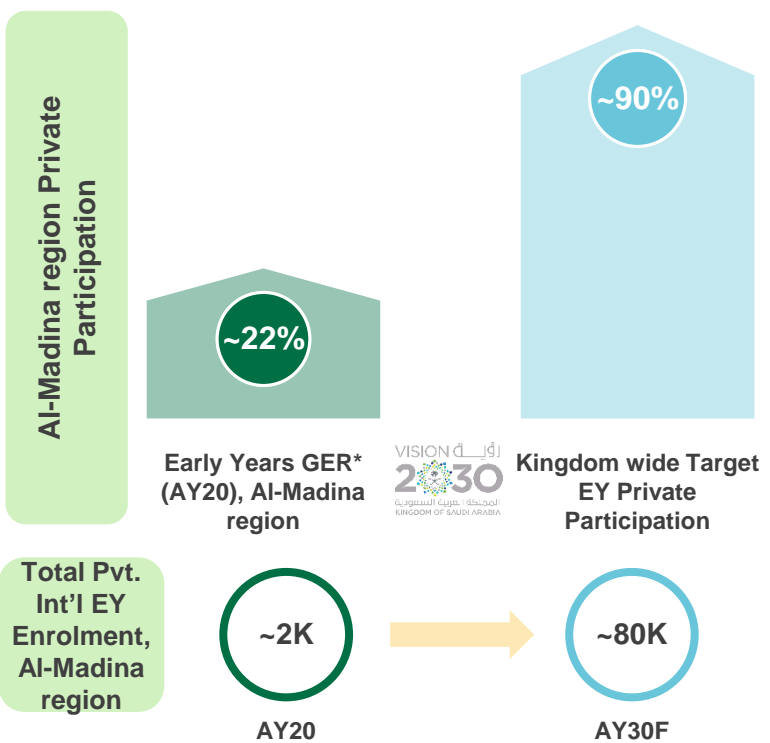
Al-Madina region Private Int'l EY

OPPORTUNITY DESCRIPTION: Invest in KSA's education sector by establishing high-quality, Private Int'l EY schools in Al-Madina region

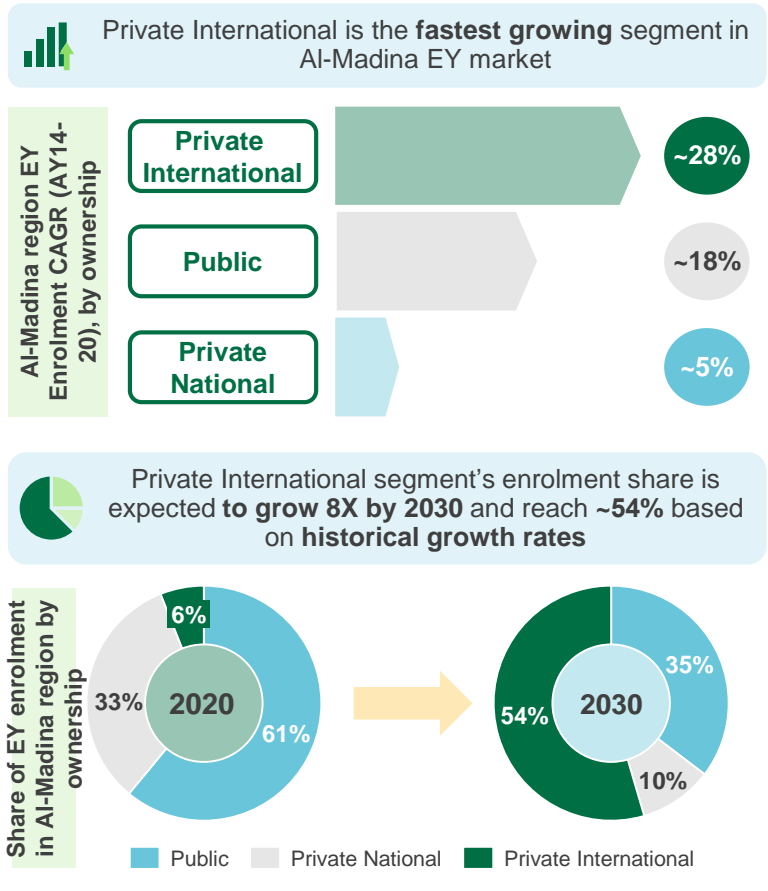
OPPORTUNITY OVERVIEW

Enrollement of Private EY in Al-Madina region

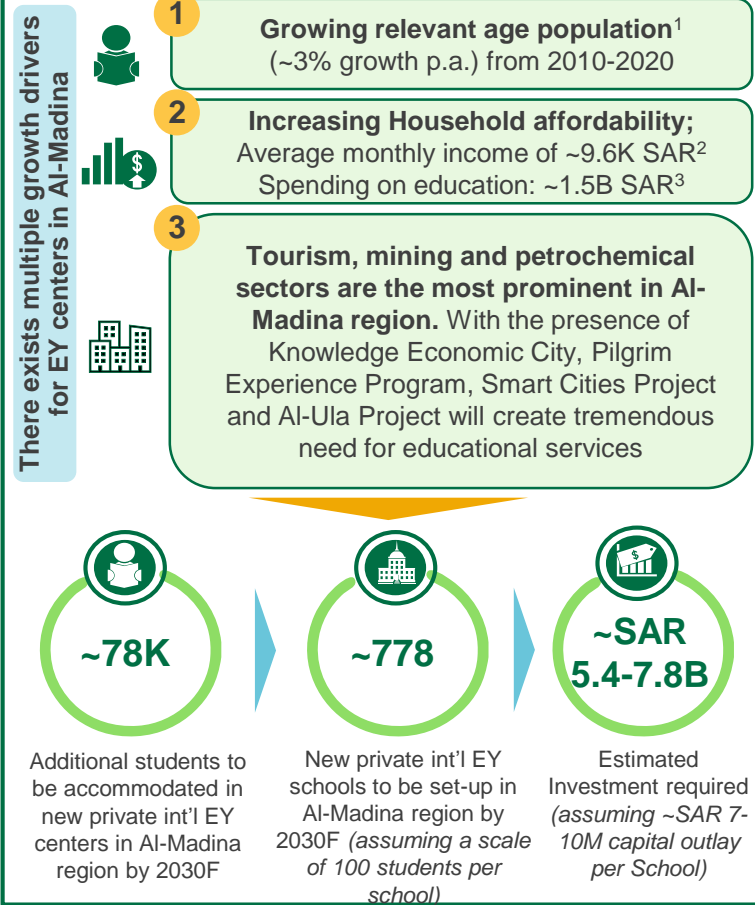
The Early Years GER* in Al-Madina is low (~22%); KSA government has set targets to **increase the GER* to ~90% across the Kingdom by 2030**, outlining headroom for growth



Al-Madina region EY Market Overview



Growth Drivers and Market Outlook



Source: General Authority of Statistics; Ministry of Education; Survey of early years centers in Al-Madina

Note 1: year 2020 population is ~2.3 Million, Note 2: average household monthly income in year 2018, Note 3: household spending in year 2017 GER*: Gross Enrollment Ratio

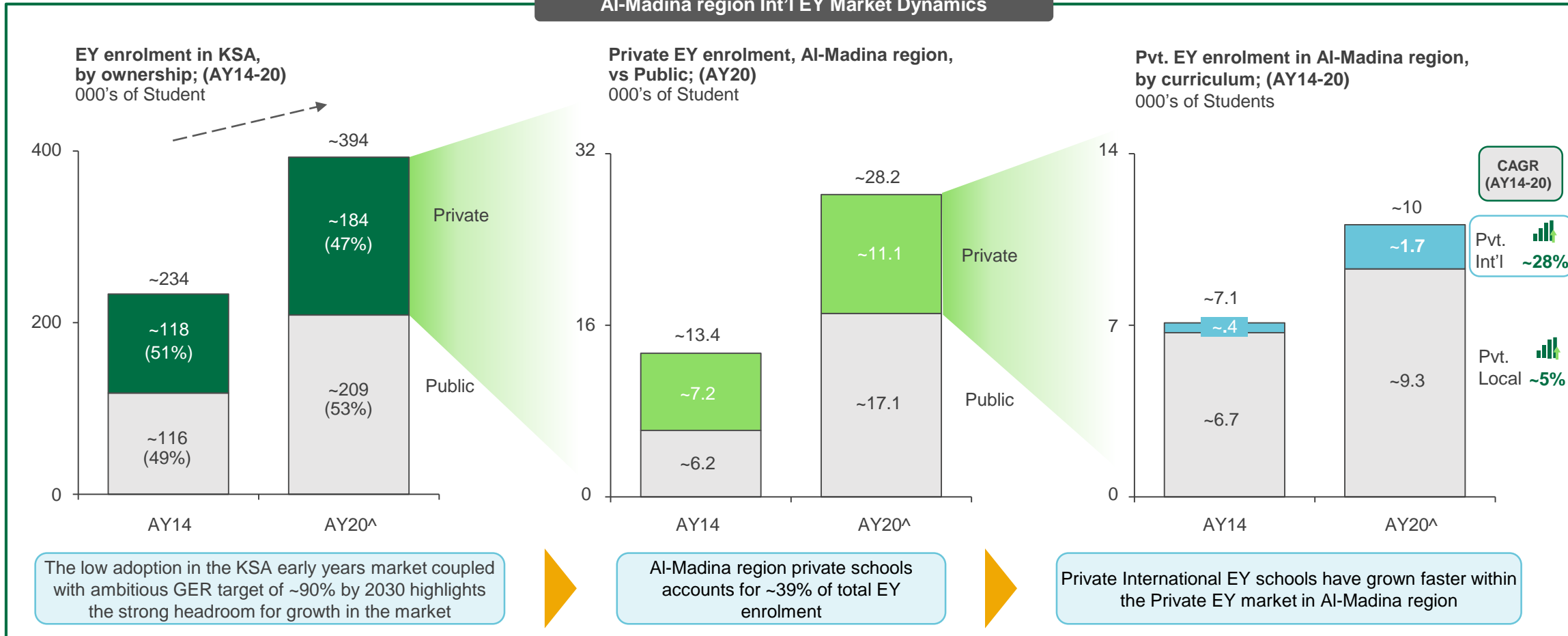


Al-Madina region Private Int'l EY

OPPORTUNITY DESCRIPTION: Invest in KSA's education sector by establishing high-quality, Private Int'l EY centers in Al-Madina region

Al-Madina region EY MARKET OVERVIEW

Al-Madina region Int'l EY Market Dynamics



Note: AY refers to the Academic Year, which typically runs from Sept – May in KSA; ^ AY21 has not been showcased due to one-off impact on enrolments due to ongoing pandemic



Al-Madina region Private Int'l EY

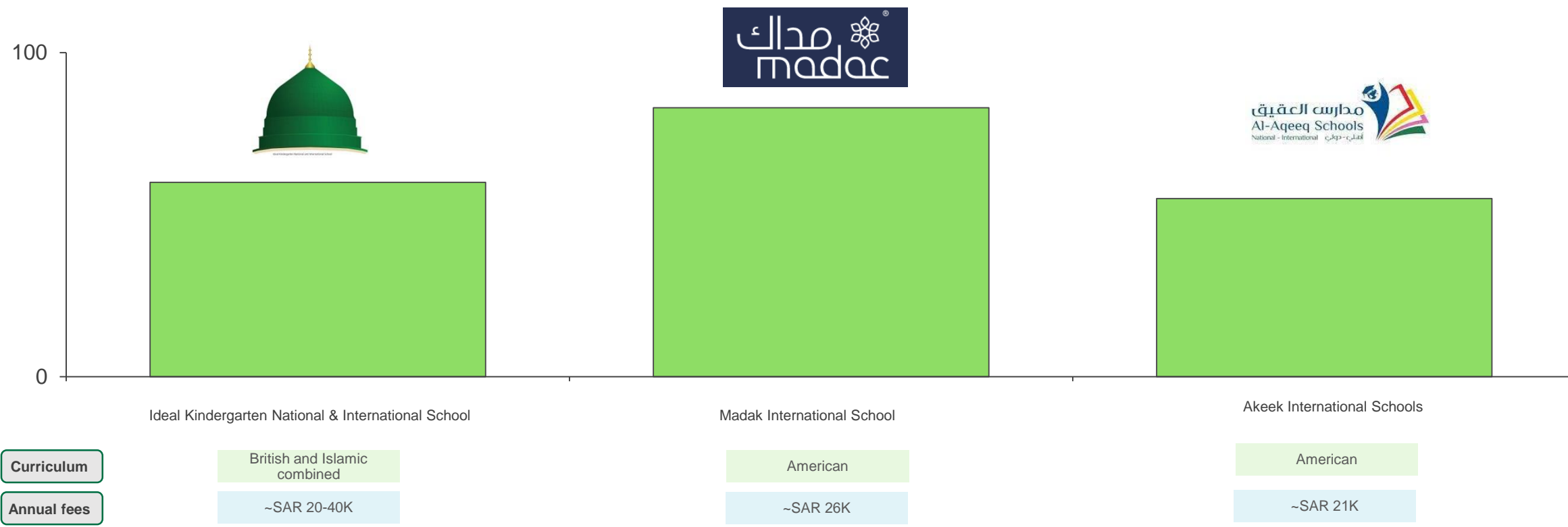
OPPORTUNITY DESCRIPTION: Invest in KSA's education sector by establishing high-quality, Private Int'l EY centers in Al-Madina region

Al-Madina region EY MARKET ASSESSMENT AND COMPETITIVE LANDSCAPE

INDICATIVE

Al-Madina region Pvt. Int'l EY Providers

Enrolment in Private International EY Schools, Al-Madina region (AY2021); Number of students



SAMPLE LIST – SCALE PROVIDERS

Note: *Enrolment for AY21



Al-Madina region Private Int'l EY

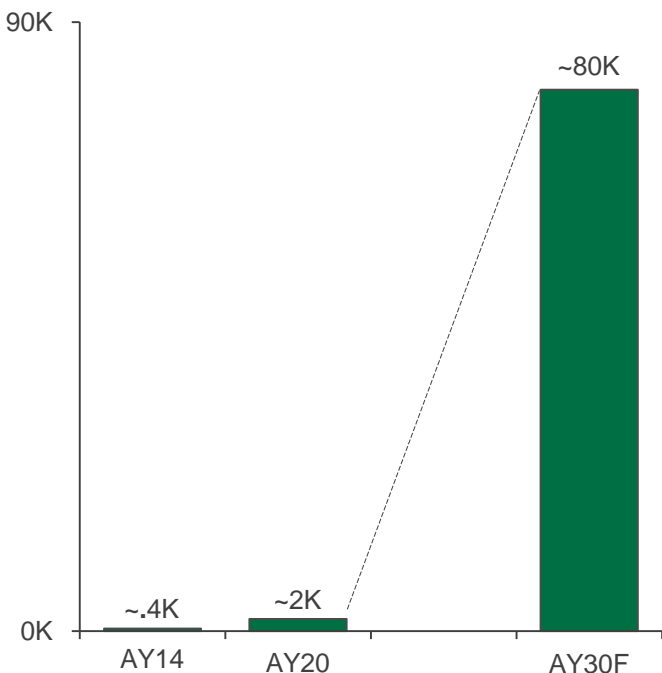
OPPORTUNITY DESCRIPTION: Invest in KSA's education sector by establishing high-quality, Private Int'l EY centers in Al-Madina region

FINANCIAL CONSIDERATIONS

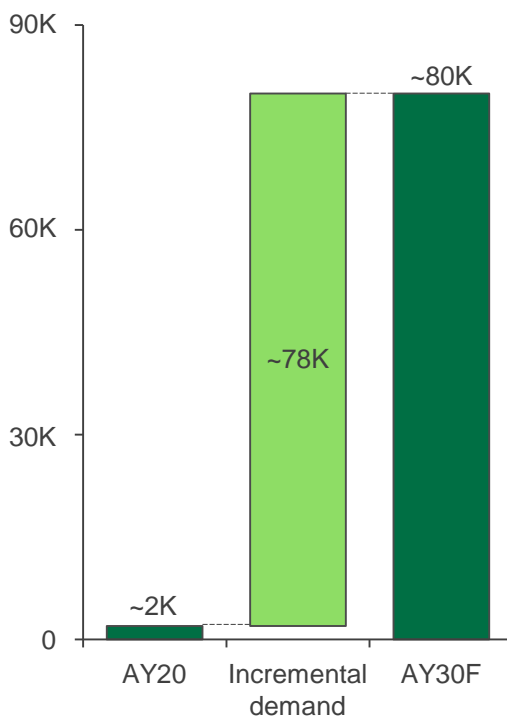
INDICATIVE

Enrolment forecast and unmet demand

Al-Madina region Private Int'l curriculum EY enrolment forecast (AY14-20, AY30F)
Number of students



Required additional capacity estimation, EY Int'l segment, Al-Madina region; (AY2020-30F);
000's of seats



Additional students in new private Int'l EY centres by 2030F



~78K

Number of new private int'l EY schools to be opened



~778

Capital outlay expense required per new center



~SAR 7 - 10M

Investment required to establish ~778 new private int'l EY Schools



~SAR 5.4 - 7.8B

DISCLAIMER

- This report must be used only to access information, and the information must not be construed, under any circumstances, explicitly or implicitly, as an offer to sell or a solicitation to buy or sell or trade in any opportunity herein mentioned.
- Ministry of Investment (MISA) has no undertaking to update these materials after the date, with the understanding that such information may become outdated or inaccurate.
- Mentioned information in this report is obtained from reliable sources but its accuracy and reliability are in no way guaranteed. No guarantee of any kind is tacit or explicit when projections of future conditions are attempted. MISA has used public/or confidential data and assumptions and has not independently verified the data and assumptions used in the analyses. Changes in underlying data or operating assumptions will clearly impact the analyses and conclusions.
- The financial evaluations, projected market and financial information, and conclusions contained in these materials are based upon standard methodologies, are not definitive projections, and are not guaranteed by MISA
- The content of this report must not be construed as an implied promise or guarantee for profit or limited loss express or implied by or from MISA or any of its officers, directors, employees and affiliates. All mentioned investments in this report are subject to risk, which should be considered prior to making any investment decisions
- MISA shall have no liability whatsoever to any third party, and hereby any third party waives any rights and claims it may have at any time against MISA with regard to this report, any services or other materials, including the accuracy or completeness thereof.

CONNECT WITH US FOR MORE DETAILS:

EducationSector@misa.gov.sa

investsaudi.sa



@investsaudi

INVEST
SAUDI 

The logo icon for Invest Saudi, featuring a stylized green 'S' shape above a green 'X' shape.